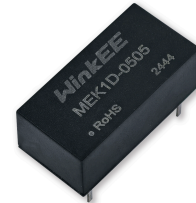


MEK1D Series

1W, Unregulated Output, 3KV Isolation, DIP14 Package DC/DC Converters

Features

- ▶ Rated power: 1W Max
- ▶ Input voltage range $\pm 10\%$
- ▶ Unregulated output
- ▶ High efficiency, up to 89%
- ▶ Small no load input current
- ▶ Isolation voltage 3KVDC
- ▶ Operating temperature range: $-40 \sim +105^{\circ}\text{C}$ ambient
- ▶ RoHS compliant
- ▶ Standard DIP14 package
- ▶ Continuous short circuit protection
- ▶ Designed to meet EN/IEC 62368-1
- ▶ 5 year warranty



Overview

The MEK1D series are DIP14 package DC/DC converters with unregulated single or dual output, and 3KVDC isolation. These converters feature high efficiency, low ripple and noise, continuous short circuit protection, and wide operating temperature range. They are widely used in distributed power system in industrial applications where isolation and voltage converting is needed.

Model Numbers

Model Number	Input Voltage [VDC] $\pm 10\%$	Output Voltage [VDC]	Output Current [mA]		Efficiency [%] Typ.	Capacitive Load [μF] Max.
			Max.	Min.		
MEK1D-0303	3.3	3.3	303	30	82	4000
MEK1D-0305	3.3	5	200	20	83	4000
MEK1D-0309	3.3	9	111	11	84	2000
MEK1D-0312	3.3	12	84	8	85	1000
MEK1D-0315	3.3	15	67	7	85	680
MEK1D-0324	3.3	24	42	4	84	560
MEK1D-0503	5	3.3	303	30	83	4000
MEK1D-0505	5	5	200	20	86	4000
MEK1D-0509	5	9	111	12	86	2000
MEK1D-0512	5	12	84	9	88	1000
MEK1D-0515	5	15	67	7	88	680
MEK1D-0524	5	24	42	4	89	560
MEK1D-0503D	5	± 3.3	± 152	± 15	84	2000
MEK1D-0505D	5	± 5	± 100	± 10	86	2000
MEK1D-0509D	5	± 9	± 56	± 6	86	1000
MEK1D-0512D	5	± 12	± 42	± 5	88	560
MEK1D-0515D	5	± 15	± 34	± 4	88	220
MEK1D-0524D	5	± 24	± 21	± 3	88	100

MEK1D Series

1W, Unregulated Output, 3KV Isolation, DIP14 Package DC/DC Converters

Model Numbers [continued]

Model Number	Input Voltage [VDC] ±10%	Output Voltage [VDC]	Output Current [mA]		Efficiency [%] Typ.	Capacitive Load [uF] Max.
			Max.	Min.		
MEK1D-1203	12	3.3	303	30	84	4000
MEK1D-1205	12	5	200	20	86	4000
MEK1D-1209	12	9	111	12	87	2000
MEK1D-1212	12	12	84	9	87	1000
MEK1D-1215	12	15	67	7	88	680
MEK1D-1224	12	24	42	5	89	560
MEK1D-1203D	12	±3.3	±152	±15	84	2000
MEK1D-1205D	12	±5	±100	±10	86	2000
MEK1D-1209D	12	±9	±56	±5	87	1000
MEK1D-1212D	12	±12	±42	±5	87	560
MEK1D-1215D	12	±15	±34	±4	88	220
MEK1D-1224D	12	±24	±21	±3	84	100
MEK1D-1505	15	5	200	20	86	4000
MEK1D-1509	15	9	111	12	87	2000
MEK1D-1512	15	12	84	9	87	1000
MEK1D-1515	15	15	67	7	88	680
MEK1D-1524	15	24	42	5	84	560
MEK1D-1505D	15	±5	±100	±10	86	2000
MEK1D-1512D	15	±12	±42	±5	87	560
MEK1D-1515D	15	±15	±34	±4	88	220
MEK1D-1524D	15	±24	±21	±2	84	100
MEK1D-2403	24	3.3	303	30	84	4000
MEK1D-2405	24	5	200	20	87	4000
MEK1D-2409	24	9	111	12	88	2000
MEK1D-2412	24	12	84	9	88	1000
MEK1D-2415	24	15	67	7	88	680
MEK1D-2424	24	24	42	5	89	560
MEK1D-2405D	24	±5	±100	±10	87	2000
MEK1D-2409D	24	±9	±56	±5	88	1000
MEK1D-2412D	24	±12	±42	±5	88	560
MEK1D-2415D	24	±15	±34	±4	88	220
MEK1D-2424D	24	±24	±21	±3	84	100

* Only typical models are listed. Other models may be available upon request.

* For dual output models, max capacitive load stipulated in the above list is for each output.

MEK1D Series

1W, Unregulated Output, 3KV Isolation, DIP14 Package DC/DC Converters

Electrical Specifications

Unless otherwise indicated, specifications are measured at $T_A=25^{\circ}\text{C}$, nominal input voltage, full load after warm up.

Parameters	Conditions	Min.	Typ.	Max.	Unit	Note
Input current Full load	$V_{IN}=3.3\text{V}$		370			
	$V_{IN}=5\text{V}$		235			
	$V_{IN}=12\text{V}$	-	99	-	mA	
	$V_{IN}=15\text{V}$		80			
	$V_{IN}=24\text{V}$		50			
Input current No load		-	3	15	mA	
Reflected Ripple Current		-	15	-	mA	
Surge voltage 1 second max	$V_{IN}=3.3\text{V}$	-0.7		5		
	$V_{IN}=5\text{V}$	-0.7		9		
	$V_{IN}=12\text{V}$	-0.7	-	18	VDC	
	$V_{IN}=15\text{V}$	-0.7		21		
	$V_{IN}=24\text{V}$	-0.7		30		
Output voltage accuracy	All models	Refer to graphic in "Characteristic Curves" section				
Line regulation For V_{IN} change of $\pm 1\%$	$V_{OUT}=3.3\text{V}$	-	± 1.5	-	%	
	All others		± 1.2			
Load regulation $I_{OUT}=10\%$ to 100% of $I_{OUT, rated}$	$V_{OUT}=3.3\text{V}$		10			
	$V_{OUT}=5\text{V}$		8			
	$V_{OUT}=9\text{V}$		8			
	$V_{OUT}=12\text{V}$	-	7	-	%	
	$V_{OUT}=15\text{V}$		6			
	$V_{OUT}=24\text{V}$		6			
Output ripple and noise	20MHz bandwidth	-	45	120	mVp-p	
Temperature coefficient	Full load	-	± 0.03	-	%/ $^{\circ}\text{C}$	
Output short circuit protection		Continuous, automatic recovery				
Input filter		Capacitor				
Hot plug		None				

* Operating with less than 10% of rated load will not cause permanent damage to the converters, but the performances data may not fall into the specifications, and reliable operating is not assured.

* Dual output models need to operate with balanced load. The load difference between two outputs over 10% may cause unstable operating of the converter.

MEK1D Series

1W, Unregulated Output, 3KV Isolation, DIP14 Package DC/DC Converters

General Specifications

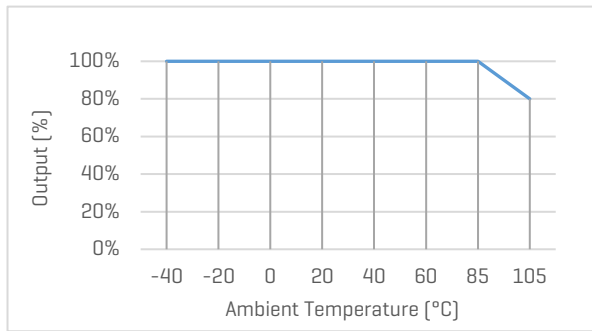
Parameters	Conditions	Min.	Typ.	Max.	Unit	Note
Isolation voltage Tested for 1 minute, leakage current less than 1mA	Input to Output	3000	-	-	VDC	
Isolation resistance Tested at 500VDC	Input to Output	1000	-	-	M ohm	
Isolation capacitance Tested at 100KHz, 0.1V	Input to Output	-	20	-	pF	
Operating temperature	See "Derating Curve"	-40	-	+105	°C	
Storage temperature		-55	-	+125	°C	
Temperature rise at case		-	25	-	°C	
Storage humidity	Non-condensing	5	-	95	%RH	
Switching frequency	Full load	-	220	-	KHz	
Pin soldering resistance 1.5mm away from case for 10 sec		-	-	300	°C	
Case material		Black plastic UL94-V0				
Cooling method		Free air convection				
Vibration		10-150Hz, 5G, 0.75mm along X, Y and Z				
Design based on standards		UL/EN/IEC 62368-1				
Safety certifications		EN/IEC 62368-1				
EMC	Emissions Immunity	CISPR32, EN55032 Class B* IEC/EN61000-4-2, Air ±8KV, Contact ±6KV, Criteria B				
MTBF	MIL-HDBK-217F	>3,500,000 Hours, T _A =25°C				
Size		19.5 x 9.8 x 8.0 mm				
Weight		2.4g Typ.				

*External circuit is required in order to meet Class B, refer to Figure 2 in Recommended External Circuit

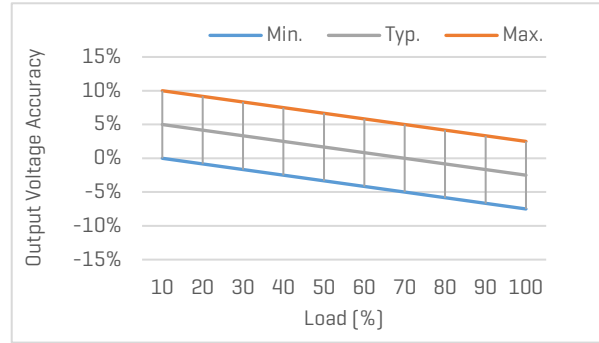
Characteristic Curves

Derating Curve

Output vs Ambient Temperature



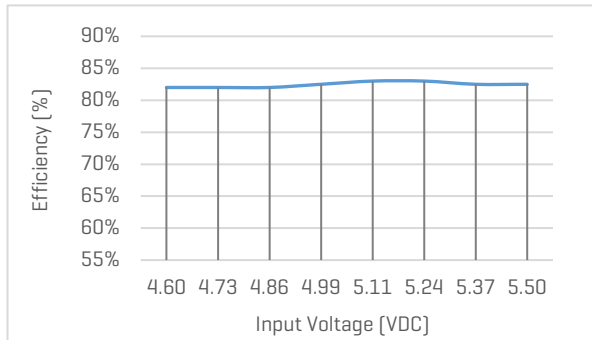
Output Voltage Accuracy vs Load



Efficiency Curves

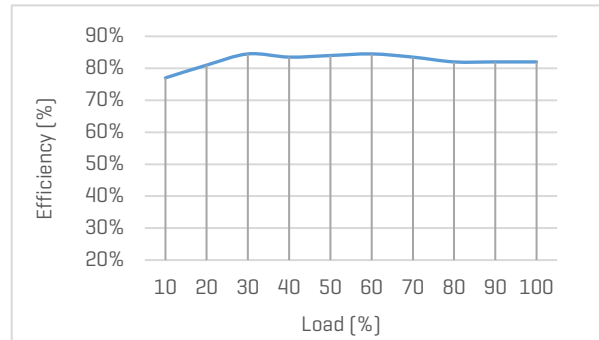
Efficiency vs Input Voltage

MEK1D-0505, with full Load



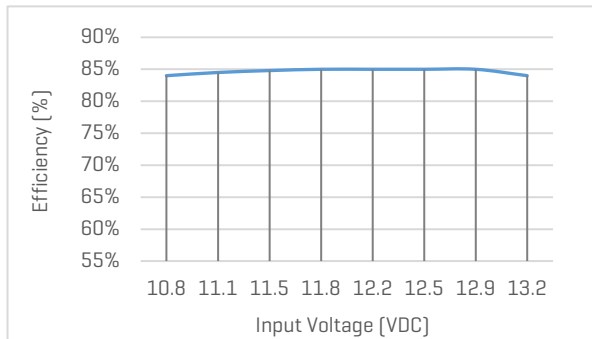
Efficiency vs Load

MEK1D-0505, with nominal input voltage



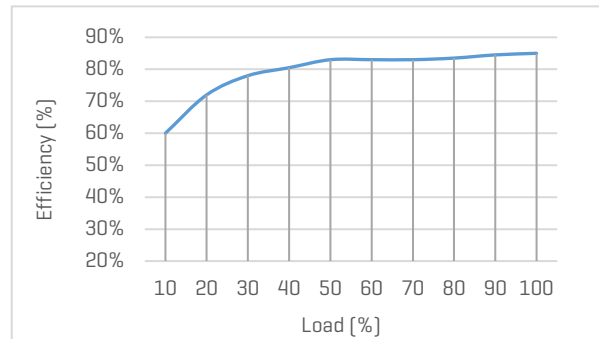
Efficiency vs Input Voltage

MEK1D-1205, with full Load



Efficiency vs Load

MEK1D-1205, with nominal input voltage

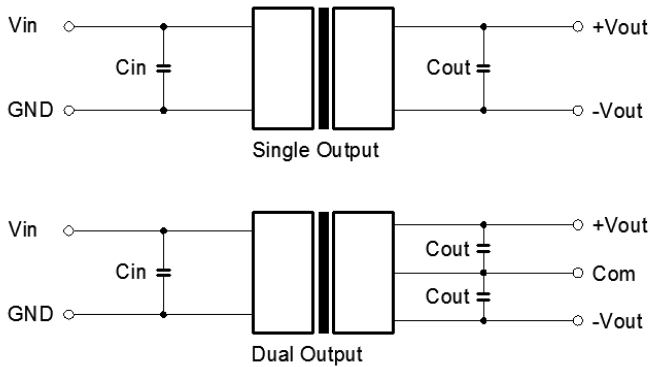


MEK1D Series

1W, Unregulated Output, 3KV Isolation, DIP14 Package DC/DC Converters

Recommended External Circuit

Typical Application Circuit



*Typical application circuit is to further lower the input and output ripple. It is not required for general use.

*Recommended component specifications are typical values. Excessive external capacitive load may cause startup problem.

[Table 1] Recommended component spec

V_{IN}	3.3, 5V	12, 15V	24V
C_{IN}	4.7uF, 16V	2.2uF, 25V	1uF, 50V

Figure 1. Typical external circuit

[Table 2] Recommended component spec

Single Out	3.3, 5V	9, 12V	15, 24V
C_{OUT}	10uF, 16V	2.2uF, 25V	1uF, 50V
Dual Out	$\pm 3.3, \pm 5V$	$\pm 9, \pm 12V$	$\pm 15, \pm 24V$
C_{OUT}	4.7uF, 16V	1uF, 25V	0.47uF, 50V

Circuit for EMC Enhancement

*Use this application circuit to meet Class B EMC performance.

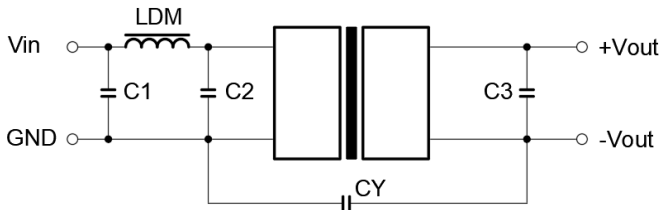


Figure 2. Circuit for EMC enhancement

[Table 3] Recommended component spec

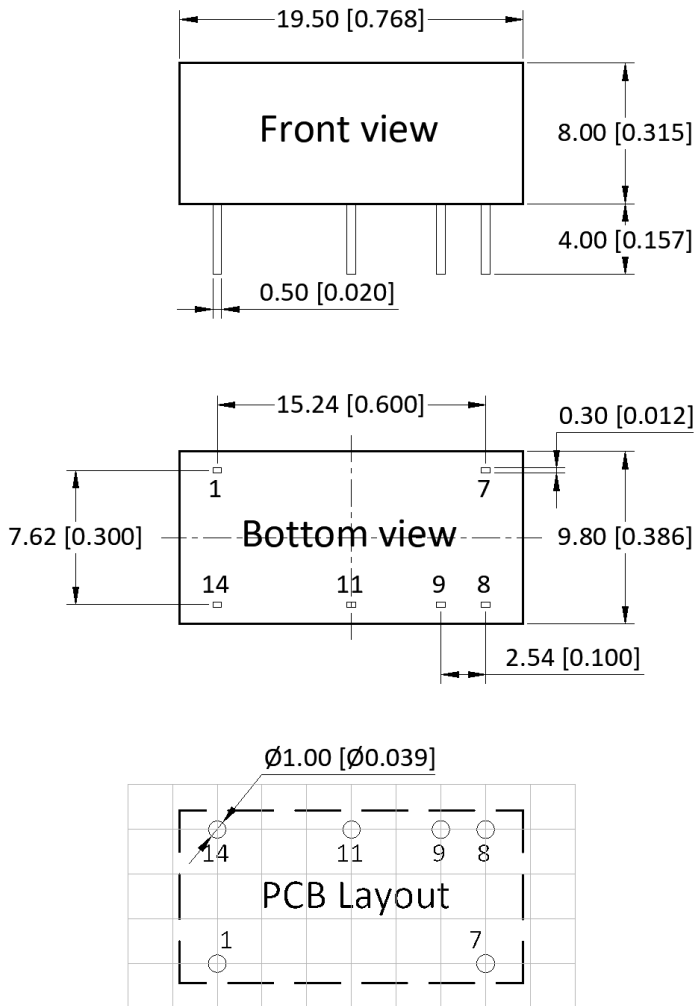
Component	LDM	C1, C2	CY
C_{OUT}	6.8uH	4.7uF, 50V	1nF, 4KV

*C3 refer to C_{OUT} in [Table 2]

MEK1D Series

1W, Unregulated Output, 3KV Isolation, DIP14 Package DC/DC Converters

Mechanical Specifications



Pin Definition

Pin #	Single Out	Dual Out
1	GND	GND
7	NC	NC
8	+V _{OUT}	+V _{OUT}
9	No Pin	COM
10	OV	-V _o
14	V _{IN}	V _{IN}

* Unless otherwise specified unit: mm [inch]

* General tolerance: ±0.50 [±0.020]

* Pin thickness: ±0.10 [±0.004]

* Footprint grid 2.54 x 2.54 mm

Copyright © WinkEE Limited. All rights reserved. WinkEE reserves the right to make changes to the product at any time without notice. Information provided by WinkEE is believed to be accurate and reliable. However, no responsibility is assumed by WinkEE for its use, nor for any infringements of patents or other rights of third parties which may result from its use.