

MEK1T-D Series

1W, Unregulated, 3KV Isolation, DC/DC Converters

Features

- ▶ Rated power: 1W max
- ▶ Input voltage range $\pm 10\%$
- ▶ Unregulated output
- ▶ High efficiency up to 85%
- ▶ Isolation voltage 3KVDC
- ▶ Small no load input current
- ▶ Operating temp. range: -40 ~ +105°C ambient
- ▶ RoHS compliant
- ▶ Compact SMD package
- ▶ Continuous short circuit protection
- ▶ Meet UL/EN/IEC 62368-1 EN 55032 Class B
- ▶ 5 year warranty



Overview

The MEK1T-D series are unregulated DC/DC converters offered in compact SMD package with 3KVDC isolation. These converters feature high efficiency, low ripple and noise, continuous short circuit protection, and wide operating temperature range -40 ~ +105°C. They are widely used in distributed power system in industrial applications where isolation and voltage converting is needed.

Model Numbers

Model Number	Input Voltage [VDC]	Output Voltage [VDC]	Output Current [mA] Max.	Efficiency [%] Typ.	Capacitive Load [μ F] Max.
MEK1T-0303D	3.3 [2.97~3.63]	± 3.3	± 152	77	± 1200
MEK1T-0305D		± 5	± 100	82	± 1200
MEK1T-0309D		± 9	± 56	82	± 470
MEK1T-0312D		± 12	± 42	82	± 220
MEK1T-0315D		± 15	± 34	82	± 220
MEK1T-0324D		± 24	± 21	84	± 100
MEK1T-0503D	5 [4.5~5.5]	± 3.3	± 152	74	± 1200
MEK1T-0505D		± 5	± 100	82	± 1200
MEK1T-0509D		± 9	± 56	83	± 470
MEK1T-0512D		± 12	± 42	83	± 220
MEK1T-0515D		± 15	± 34	83	± 220
MEK1T-0524D		± 24	± 21	85	± 100
MEK1T-1203D	12 [10.8~13.2]	± 3.3	± 152	77	± 1200
MEK1T-1205D		± 5	± 100	82	± 1200
MEK1T-1207D		± 7.5	± 67	82	± 470
MEK1T-1209D		± 9	± 56	83	± 470
MEK1T-1212D		± 12	± 42	83	± 220
MEK1T-1215D		± 15	± 34	83	± 220
MEK1T-1224D		± 24	± 21	85	± 100

MEK1T-D Series

1W, Unregulated, 3KV Isolation, DC/DC Converters

Model Numbers

Model Number	Input Voltage [VDC]	Output Voltage [VDC]	Output Current [mA] Max.	Efficiency [%] Typ.	Capacitive Load [uF] Max.
MEK1T-1515D	15 [13.5~16.5]	±15	±34	83	±220
MEK1T-2405D	24 [21.6~26.4]	±5	±100	82	±1200
MEK1T-2409D		±9	±56	83	±470
MEK1T-2412D		±12	±42	83	±220
MEK1T-2415D		±15	±34	83	±220
MEK1T-2424D		±24	±21	85	±100

Electrical Specifications

Unless otherwise indicated, specifications are measured at $T_A=25^{\circ}\text{C}$, nominal input voltage, full load after warm up.

Parameters	Conditions	Min.	Typ.	Max.	Unit
Input current Full load	$V_{IN}=3.3\text{V}$ $V_{IN}=5\text{V}$ $V_{IN}=12\text{V}$ $V_{IN}=15\text{V}$ $V_{IN}=24\text{V}$	-	370 230 99 80 51	-	mA
Input current No load		-	10	-	mA
Reflected Ripple Current		-	15	-	mA
Surge voltage 1 second max	$V_{IN}=3.3\text{V}$ $V_{IN}=5\text{V}$ $V_{IN}=12\text{V}$ $V_{IN}=15\text{V}$ $V_{IN}=24\text{V}$	-0.7 -0.7 -0.7 -0.7 -0.7	-	5 9 18 21 30	VDC
Output voltage accuracy	All models	Refer to graphic in "Characteristic Curves" section			
Line regulation For V_{IN} change of $\pm 1\%$	$V_{OUT}=\pm 3.3\text{V}$ All others	-	-	± 1.5 ± 1.2	%
Load regulation [1] $I_{OUT}=10\%$ to 100% of $I_{OUT, rated}$	$V_{OUT}=\pm 3.3\text{V}$ $V_{OUT}=\pm 5\text{V}$ All others	-	15 10 8	20 15 10	%
Temperature coefficient	Full load	-	± 0.02	-	%/ $^{\circ}\text{C}$
Output ripple and noise	20MHz bandwidth		60	150	mVp-p
Output short circuit protection		Continuous, automatic recovery			

Electrical Specifications

Unless otherwise indicated, specifications are measured at $T_A=25^{\circ}\text{C}$, nominal input voltage, full load after warm up.

Parameters	Conditions	Min.	Typ.	Max.	Unit
Input filter		Capacitor			
Hot plug		None			

Note [1]: Operating with less than 10% of rated load will not cause permanent damage to the converters, but the performances data may not fall into the specifications, and reliable operating is not assured. Dual output models need to operate with balanced load. The load difference between two outputs over 10% may cause unstable operating of the converter.

General Specifications

Parameters	Conditions	Min.	Typ.	Max.	Unit
Isolation voltage 1 minute, leakage current <1mA	Input to Output	1500	-	-	VDC
Isolation resistance Tested at 500VDC	Input to Output	1000	-	-	M ohm
Isolation capacitance 100KHz, 0.1V	Input to Output	-	20	-	pF
Switching frequency	Full load	-	220	-	KHz
Operating temperature	See "Derating Curve"	-40	-	+105	$^{\circ}\text{C}$
Storage temperature		-55	-	+125	$^{\circ}\text{C}$
Temperature rise at case	Full load	-	25	-	$^{\circ}\text{C}$
Storage humidity	Non-condensing	5	-	95	%RH
Reflow soldering temperature		Peak temp. 217 - 245 $^{\circ}\text{C}$, maximum duration 60s			
Case material		Black plastic UL94-V0			
Cooling method		Free air convection			
Vibration		10-150Hz, 5G, 0.75mm along X, Y and Z			
Moisture sensitivity level [MSL]		IPC/JEDEC J-STD-020D.1 Level 1			
MTBF	MIL-HDBK-217F	>3,500,000 Hours, $T_A=25^{\circ}\text{C}$			
Safety standards		UL/EN/IEC 62368-1			
EMC standards	CISPR32, EN55032	Class B with "External Circuit"			
ESD	IEC/EN61000-4-2	Contact $\pm 4\text{kV}$, Air $\pm 8\text{kV}$, perf. Criteria B			
Size & Weight		15.24x11.4x7.25mm, 1.2g Typ.			

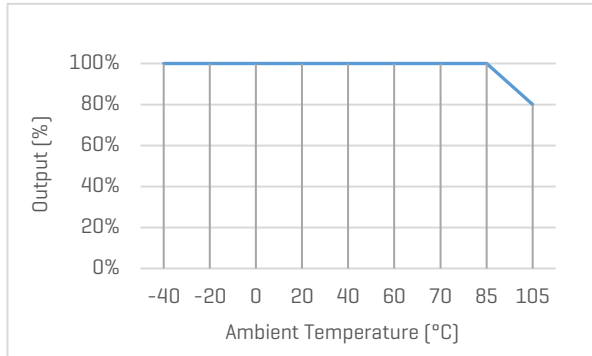
MEK1T-D Series

1W, Unregulated, 3KV Isolation, DC/DC Converters

Characteristic Curves

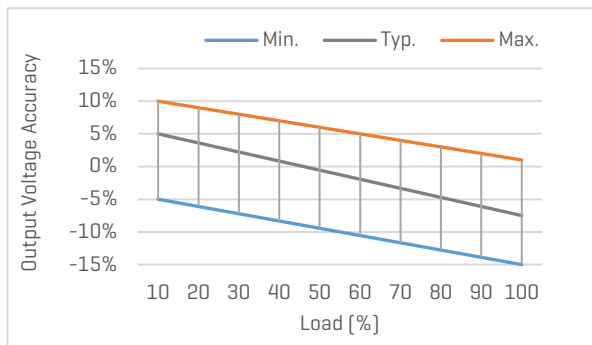
Output vs Ambient Temperature

All models

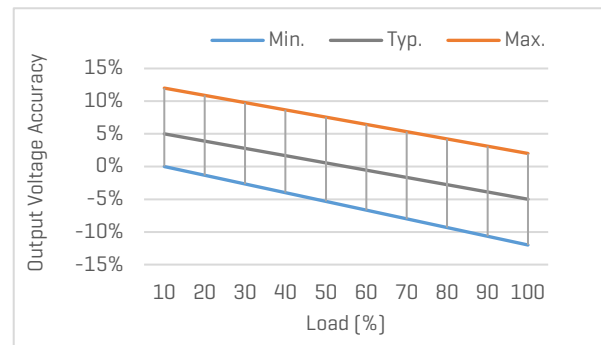


Output Voltage Accuracy vs Load

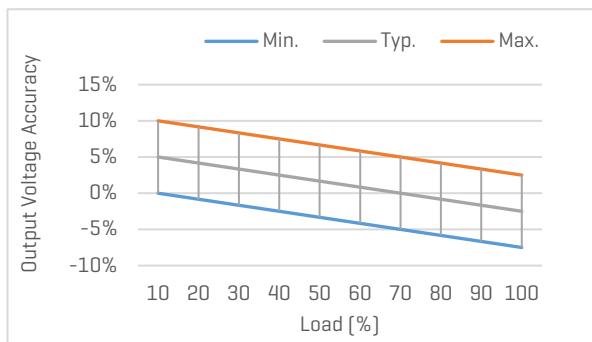
3.3V input models, and $V_{OUT}=3.3V$



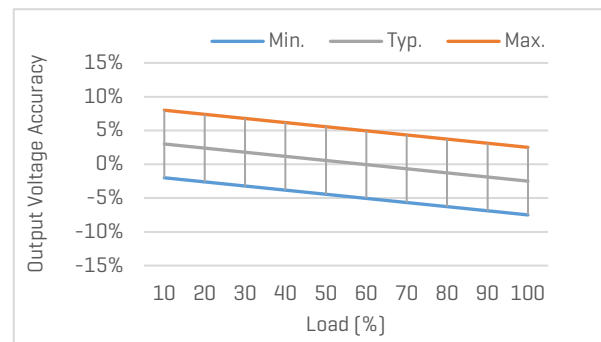
5V input models, and $V_{OUT}=3.3V$



3.3V or 5V input models, and $V_{OUT}=None$ 3.3V



All models with 12, 15, 24V input



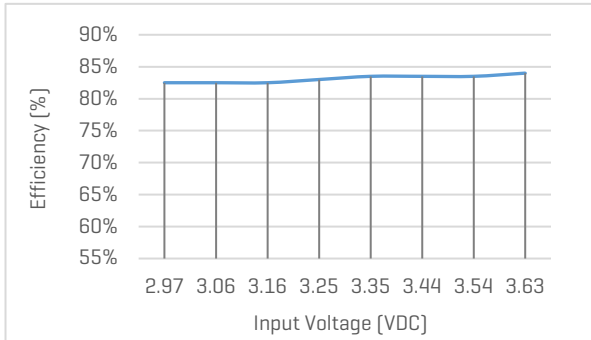
MEK1T-D Series

1W, Unregulated, 3KV Isolation, DC/DC Converters

Characteristic Curves

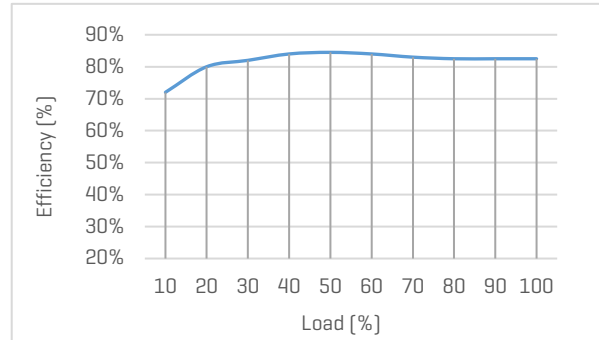
Efficiency vs Input Voltage

MEK1T-0303D, with full Load



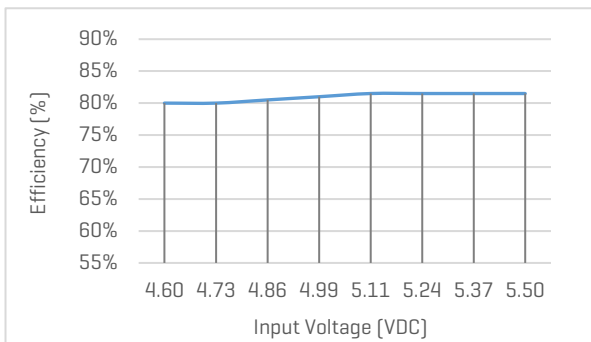
Efficiency vs Load

MEK1T-0303D, with nominal input voltage



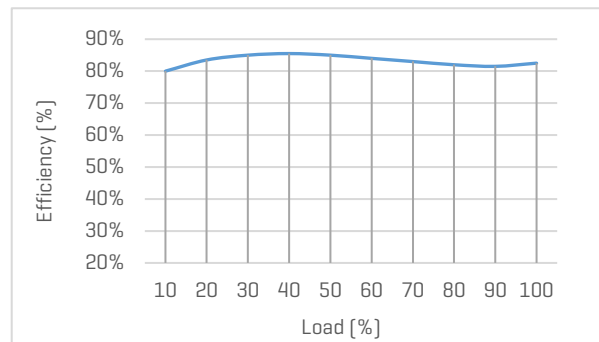
Efficiency vs Input Voltage

MEK1T-0503D, with full Load



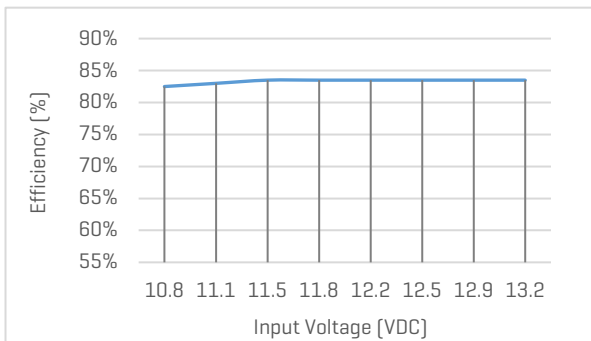
Efficiency vs Load

MEK1T-0503D, with nominal input voltage



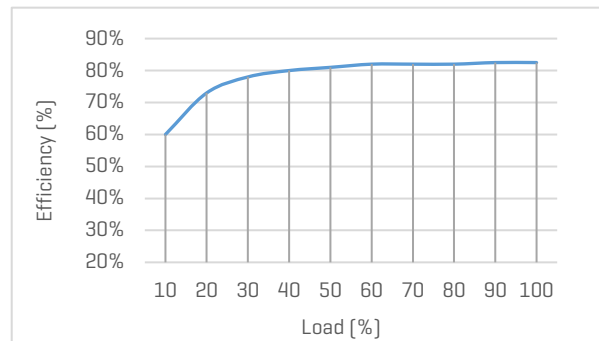
Efficiency vs Input Voltage

MEK1T-1205D, with full Load



Efficiency vs Load

MEK1T-1205D, with nominal input voltage



MEK1T-D Series

1W, Unregulated, 3KV Isolation, DC/DC Converters

Recommended External Circuit

Typical Application Circuit

*Typical application circuit is to further lower the input and output ripple. It is not mandatory.



Figure 1. Typical external circuit

[Table 1] Recommended component spec

Input voltage	3.3V	5V	12V	15V	24V
C_{IN}	10uF, 16V	4.7uF, 16V	2.2uF, 25V	2.2uF, 25V	1uF, 50V

[Table 2] Recommended component spec

Output voltage	$\pm 3.3, \pm 5V$	$\pm 9V$	$\pm 12V$	$\pm 15V$	$\pm 24V$
C_{OUT}	10uF, 16V	2.2uF, 16V	2.2uF, 25V	1uF, 25V	1uF, 50V

EMC Enhancement for EN55032 Class B

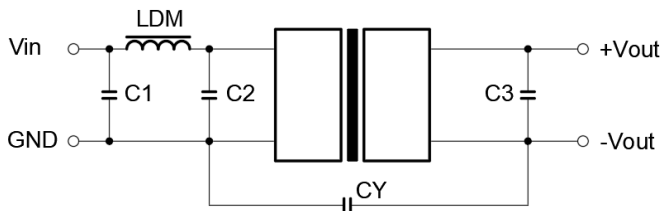


Figure 2. Circuit for EMC enhancement

[Table 3] Recommended component spec

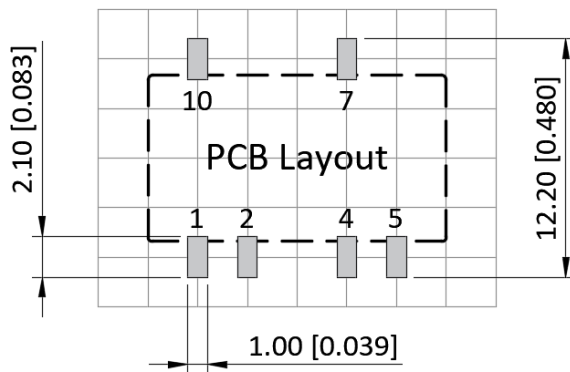
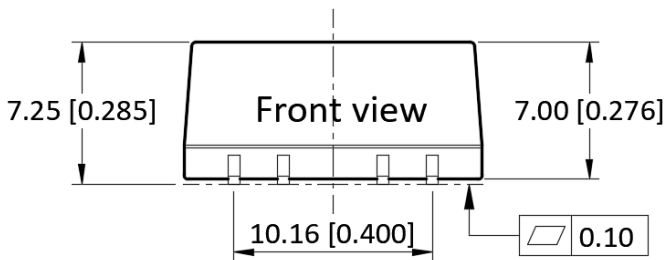
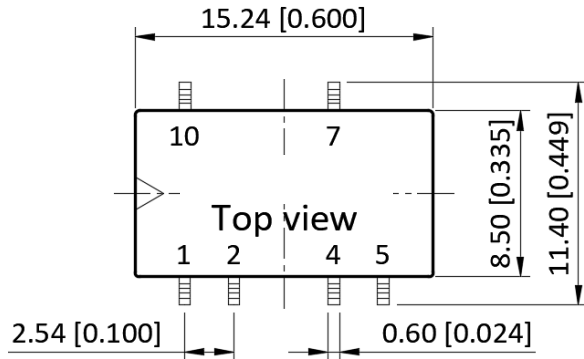
Component	LDM	C1, C2	CY [3.3...9V _{OUT}]	CY [12...24V _{OUT}]
Spec	6.8uH	4.7uF, 50V	100pF, 4KV	1nF, 4KV

*"C3" Refer to C_{OUT} in [Table 2]

MEK1T-D Series

1W, Unregulated, 3KV Isolation, DC/DC Converters

Mechanical Specifications



Pin Definition

Pin #	Dual Out
1	-V _{IN}
2	+V _{IN}
4	COM
5	-V _{OUT}
7	+V _{OUT}
10	N/C

* Unless otherwise specified unit: mm [inch]

* General tolerance: ± 0.25 [± 0.010]

* Pin thickness: ± 0.10 [± 0.004]

* Footprint grid 2.54 x 2.54 mm

Copyright @ WinkEE Limited. All rights reserved. WinkEE reserves the right to make changes to the product at any time without notice. Information provided by WinkEE is believed to be accurate and reliable. However, no responsibility is assumed by WinkEE for its use, nor for any infringements of patents or other rights of third parties which may result from its use.